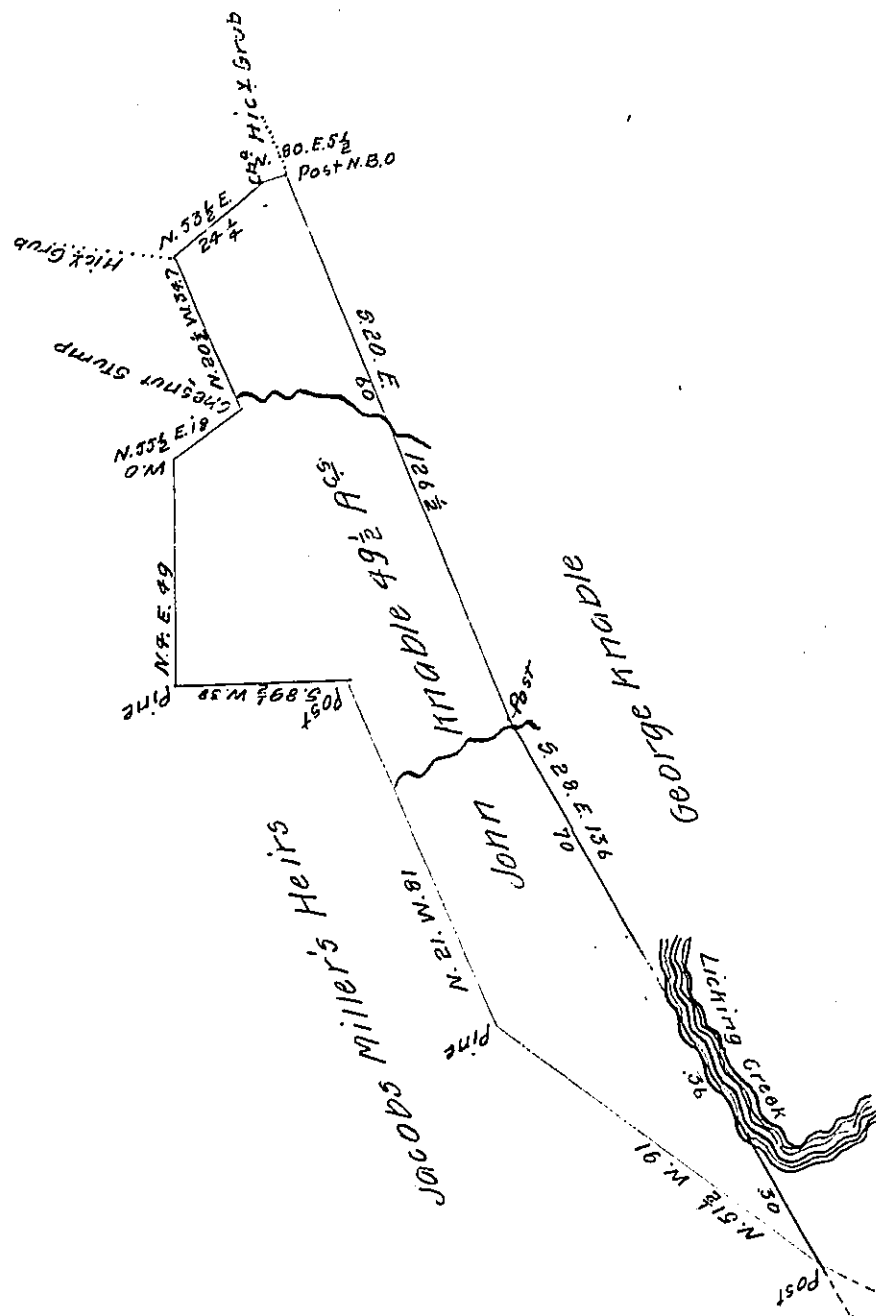


FORM No. 1.



A Draught of a tract of land, situate in Bethel Township Bedford County, containing forty nine acres and a half, with allowance of six percent &c<sup>9</sup> Surveyed for John Knable the 13<sup>th</sup> day of February A.D. 1822, pursuant a warrant Granted the 7<sup>th</sup> day of March A.D. 1821 for surveying thirty acres.

John Wolfe D.S.

To Samuel Cochran Esq<sup>r</sup>  
Surveyor General

IN TESTIMONY that the above is a copy of the original remaining on file in the Department of Internal Affairs of Pennsylvania, made conformably to an Act of Assembly approved the 16th day of February 1833, I have hereunto set my hand and caused the Seal of said Department to be affixed at Harrisburg, this thirtieth day of July 1907

*Henry How*  
Secretary of Internal Affairs.